

THE GARDEN GALLERY

SUMMER EXHIBITION 1997



▲ SOMETHING FISHY  
by Miranda Michels  
(Polished steel)

ELEGY ▼  
by Helen Sinclair  
(Stone resin)



◀ CELESTIAL SPIRIT I  
by Peter Clarke  
(Copper, steel, stained glass)

PRIVATE VIEW

SATURDAY 3 MAY 11 ~ 5

EXHIBITION OPENING TIMES

6 MAY - 2 AUGUST

SATURDAYS • TUESDAYS • THURSDAYS - 10 ~ 5

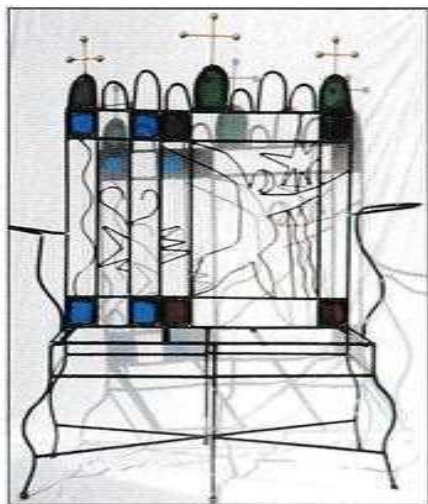
*By arrangement on other days*

AND DURING AUGUST AND SEPTEMBER

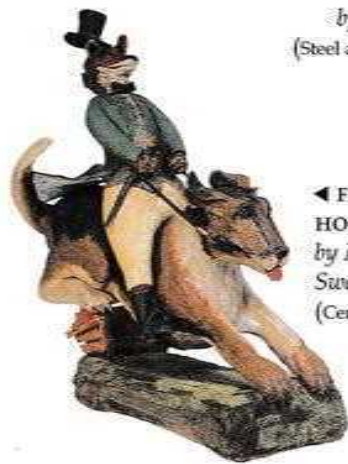
ROOKERY LANE, BROUGHTON, STOCKBRIDGE, HAMPSHIRE, SO20 8AZ  
TEL: 01794 301144 FAX: 01794 301761



▲ **AZTEC**  
by Antonia Spowers  
(Pine on oak base)



▲ **BENCH**  
by Paul Leyland  
(Steel and stained glass)



◀ **FOX AND HOUND**  
by Millie Wood Swanepoel  
(Ceramic)



▶ **TABLE**  
by Emma Lush  
(Ceramic and glass)



◀ **BONE STRUCTURE III**  
by Natasha Carsberg  
(Steel)



◀ **MOSAIC**  
by Jan O'Highway



▶ **HORSE HEAD**  
by Althea Wynne  
(Bronze on ceramic base)

▶ **FROZEN FOUNTAIN**  
by Giuseppe Lund  
(Steel and glass)



▼ **STONEWARE URN**  
by Jenifer Jones



▶ **VERTICAL DIAL**  
by Ben Jones  
(Bere stone)



▼ **SUNDIAL**  
by Richard Bent  
(Steel, hot-forged and painted)

