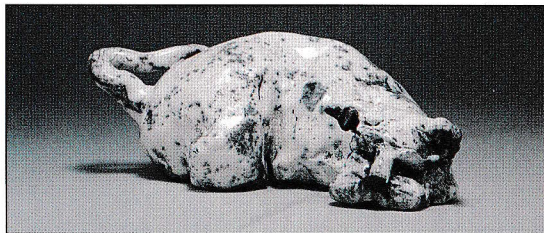


B/c 2635B.



◀ THE SPACE BETWEEN  
by Greta Berlin  
(Alabaster)

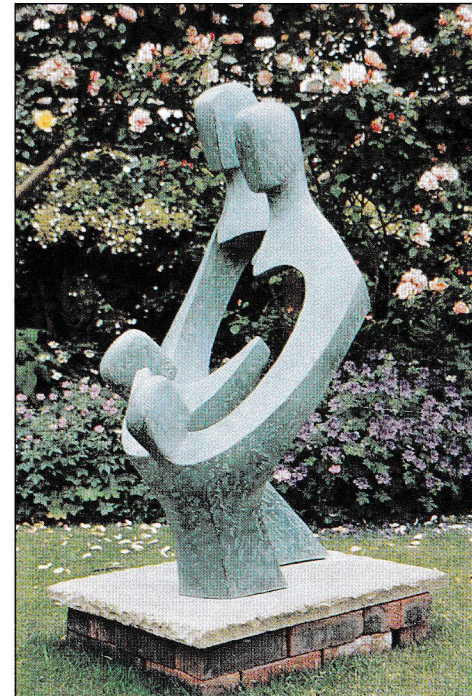


◀ SLEEPING DOG  
by Ian Gregory  
(Ceramic)

Printed by Salisbury Printing Co. Ltd

# THE GARDEN GALLERY

## SUMMER EXHIBITION 1996



◀ LOVE OF THE FAMILY  
by John Brown  
(Bronze/bronze resin)

### PRIVATE VIEW

SATURDAY 1 JUNE 11 ~ 5

### EXHIBITION OPENING TIMES

4 JUNE - 3 AUGUST

SATURDAYS • TUESDAYS • THURSDAYS - 10 ~ 5

*Other days by arrangement*

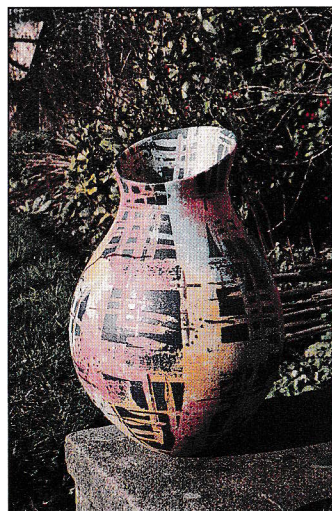
ROOKERY LANE, BROUGHTON, STOCKBRIDGE, HAMPSHIRE, SO20 8AZ  
TEL: 01794 301144 FAX: 01794 301761

2635B.

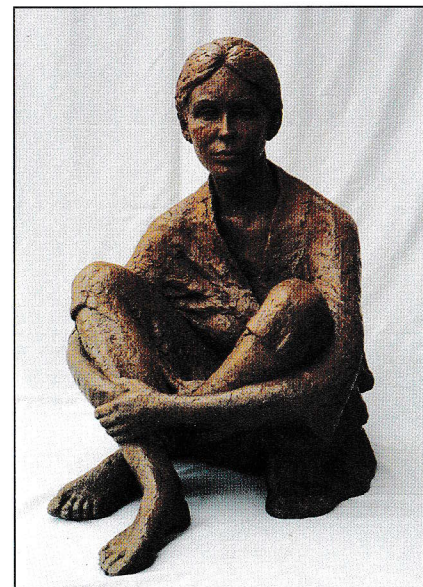




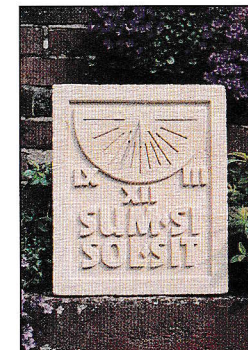
◀ **SPRING**  
by Lyn Constable  
Maxwell  
(Bronze)



▲ **CERAMIC POT** ▲  
by Carolyn Genders



◀ **GWENAELA**  
by Sukey Erland  
(Ceramic for bronze)



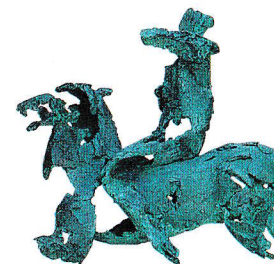
◀ **SUM SI SOL SIT**  
by Ben Jones  
(Guiting stone)

▼ **AFTER PARIS** ▼  
by Helen Sinclair  
(Stone resin)



▲ **TIGER**  
by Pamela Leung  
(Ceramic)

▶ **THAT** ▶  
**SAME SPIRIT**  
by Carole Hodgson  
(Bronze)



◀ **TABLE AND CHAIRS**  
by Johnny Woodford  
(Elm, glass, yew and steel)



▲ **GATE**  
by Giuseppe Lund  
(Steel)



◀ **DODO**  
by Dennis  
Fairweather  
(Clay)